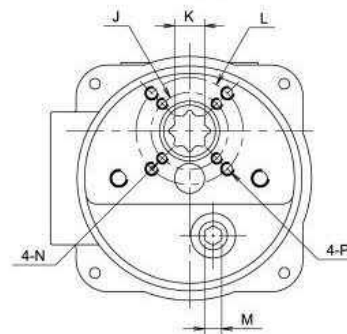
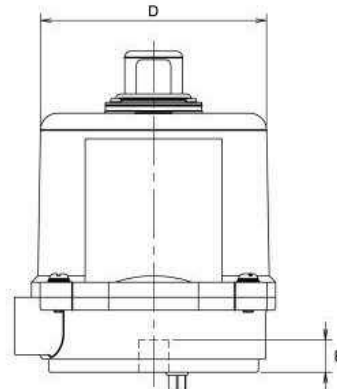
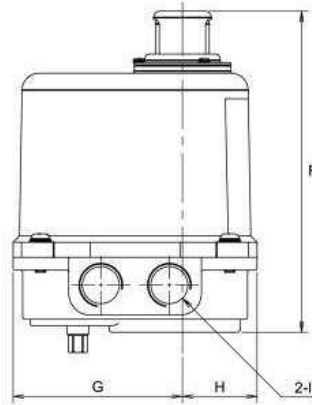
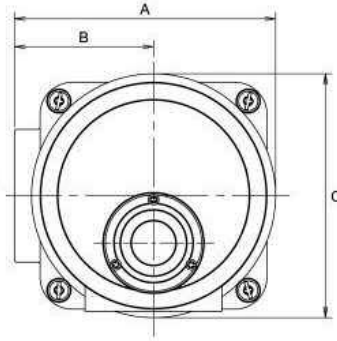




# Delan

## Kwartslag aandrijving OM



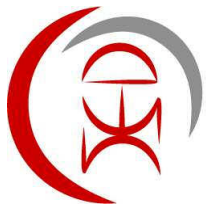
\*\*Option (1)K=11 (2)K=9  
 \*\*With Modulation Card F=183  
 \*\*No Mechanical stops

Unit:mm

Dimension	A	B	C	D	E	F	G	H	I	J	K	L	M	N	P	Flange Type
Model NO.											Max					
OM-1	122	65	114	ø106	15	150	79	35	1/2 PS	ø36	14	ø50	8	M5*0.8	M6*1.0	F03/F05

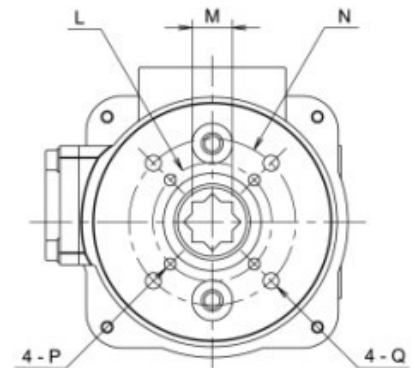
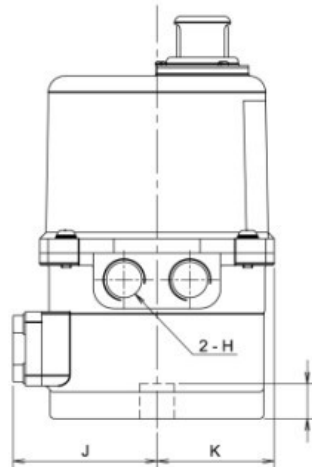
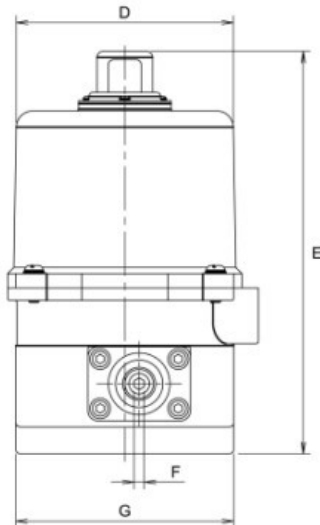
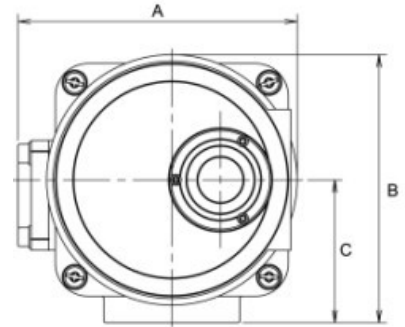
Model NO.	Power (Watts)	Torque (Nm)	Speed (Sec/900)	Weight (kg)	Manual Override	Mounting flange (ISO 5211)
OM-1	10W	35	12	2.0	Lever	F05/F03

Datum: 12/12/14



# Delan

## Kwartslag aandrijving OM



Model NO.	Power (Watts)	Torque (Nm)	Speed (Sec/90°)	Weight (kg)	Manual Override	Mounting flange
OM-A	10W	50	20	3.0	N/A	F07
OM-A-M	10W	50	20	3.0	Lever	F07

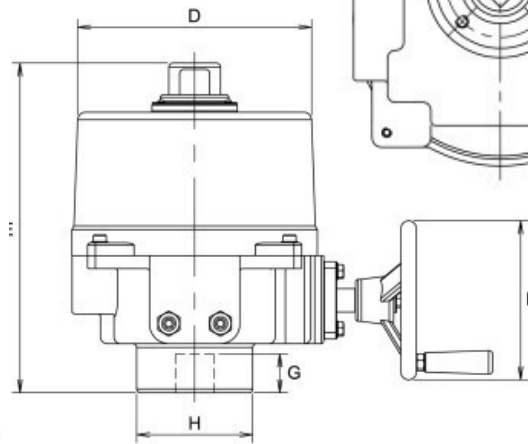
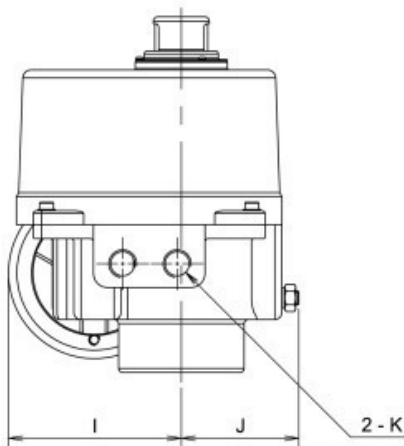
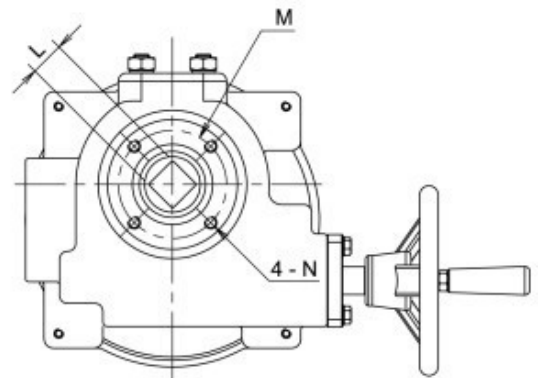
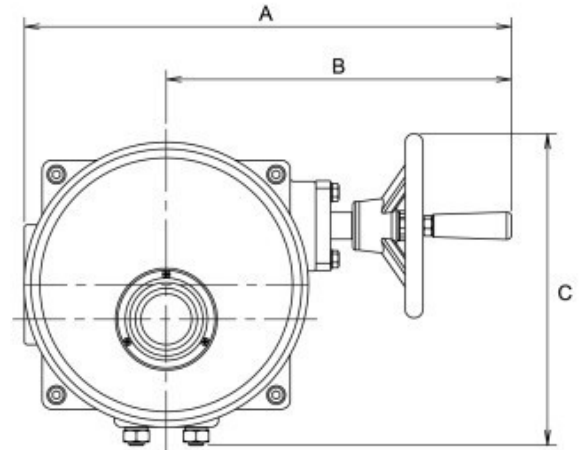
Dimension Model NO.	A	B	C	D	E	F	G	H	I	J	K	L	M	N	P	Q
OM-A	114	122	65	Ø106	196	--	Ø106	1/2 PS	17	57	57	Ø50	17	Ø70	M6 x 1,0	M8 x 1,25
OM-A-M	127	122	65	Ø106	196	5	Ø102	1/2 PS	17	70	57	Ø50	17	Ø70	6 x 1,0	8 x 1,25

Datum: 12/12/14



# Delan

## Kwartslag aandrijving OM



Model NO.	Power (Watts)	Torque (Nm)	Speed (Sec/90°)	Weight (kg)	Manual Override	Mounting flange
OM-2	40W	90	15	11.0	Handwheel	F07
OM-3	40W	150	22	11.0	Handwheel	F07

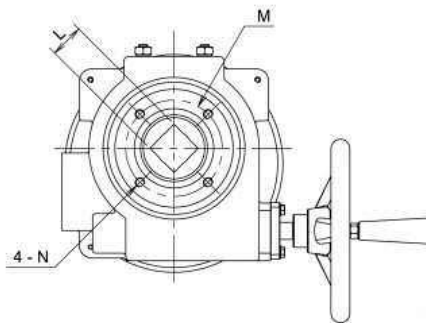
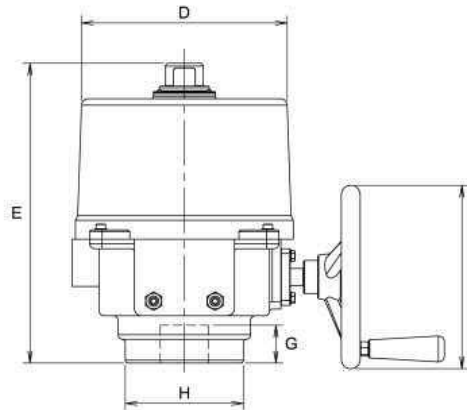
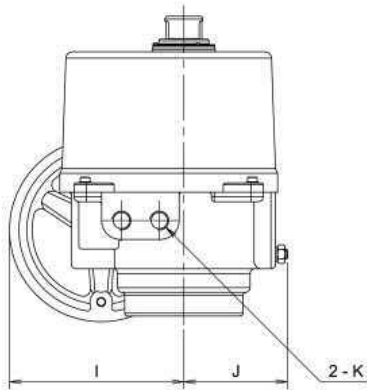
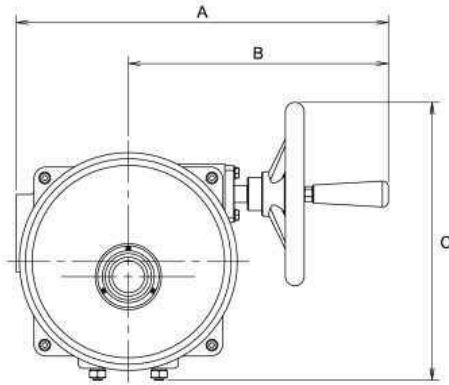
Dimension Model NO.	A	B	C	D	E	F	G	H	I	J	K	L	M	N
OM-2 ~OM-3	326	231	208	Ø181	255	Ø123	30	Ø90	124	84	1/2 PS	22	Ø70	M8 x 1,25

Datum: 12/12/14



# Delan

## Kwartslag aandrijving OM



\*\*Note:with torque switch A=460

Unit:mm

Dimension	A	B	C	D	E	F	G	H	I	J	K	L	M	N	Flange Type
Model NO.												Max			
OM-4~OM-6	394	275	294	∅217	317	∅194	40	∅125	184	110	1/2 PS	36	∅102	M10*1.5	F10

Model NO.	Power (Watts)	Torque (Nm)	Speed (Sec/900)	Weight (kg)	Manual Override	Mounting flange (ISO 5211)
OM-4	120W	400	16	22.0	Hand-wheel	F10
OM-5	120W	500	22	22.0	Hand-wheel	F10
OM-6	120W	650	28	22.0	Hand-wheel	F10

Datum: 12/12/14